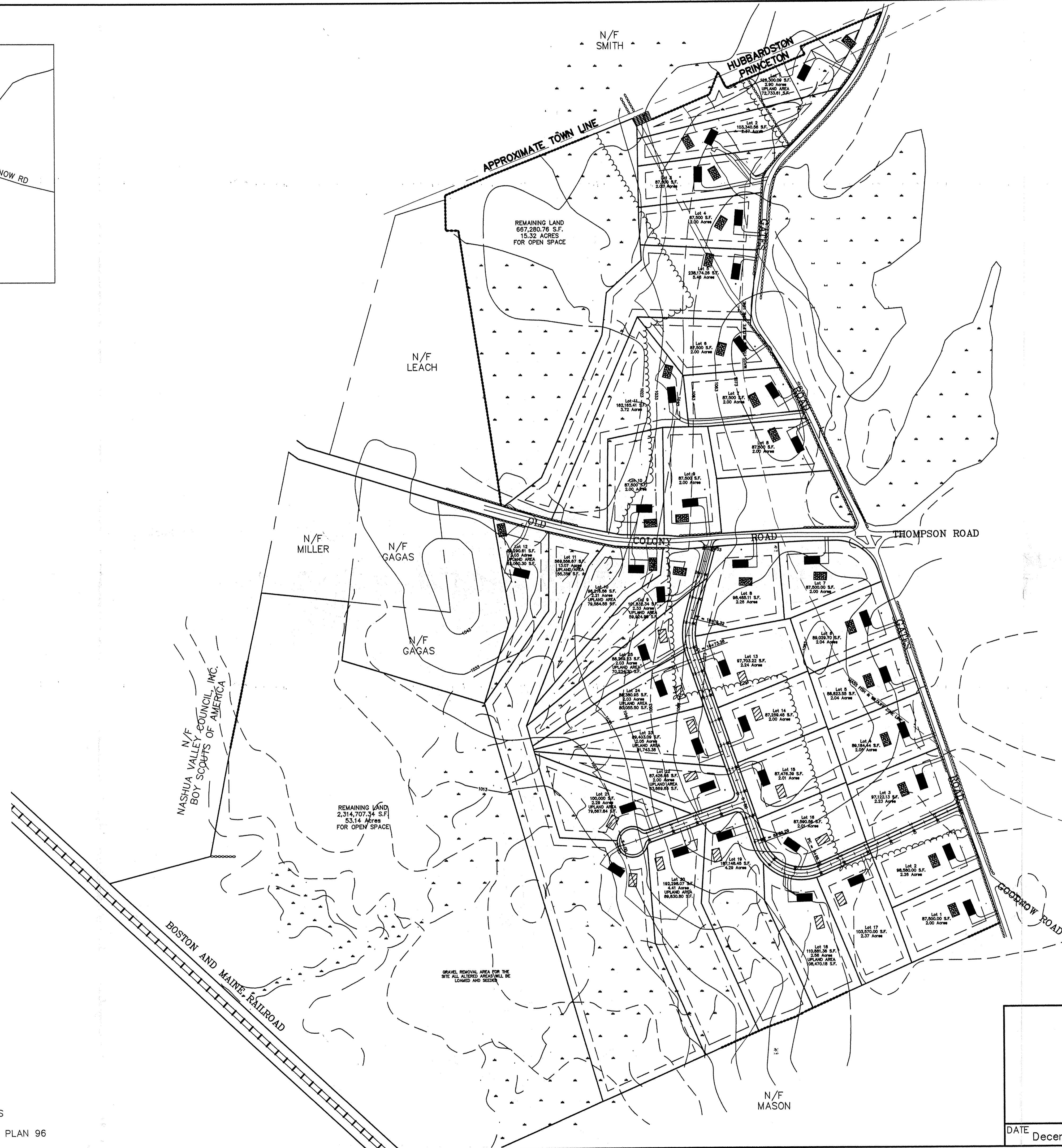


LOCUS
NOT TO SCALE

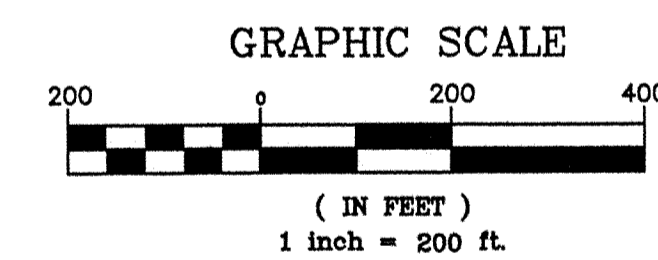


NOTES:

- 1) PROPOSED ROADWAY DRAINAGE WILL BE IN ACCORDANCE WITH D.E.P. STORM WATER POLICY.
- 2) LOTS 1-12 ARE NO APPROVAL REQUIRED LOTS.
- 3) LOTS 13-25 WILL BE DESIGNED PER THE PRINCETON SUBDIVISION RULES AND REGULATIONS.
- 4) ALL LOTS ON PARCEL 2 ARE NO APPROVAL REQUIRED LOTS.

LEGEND:

- Proposed House
- Official Soil Tests / Proposed Septic
- Proposed Soil Test Area
- Proposed Well
- Rail Road
- Existing Tree Line
- Stone Wall
- Wetland Line
- Wetland Area



Douglas E. Resto, P.E.
1-13-07

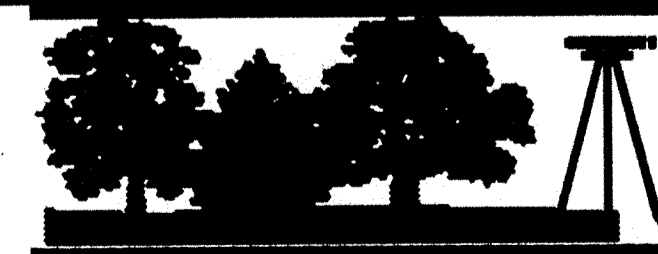
Site Plan
Located on
GATES ROAD
Princeton, Massachusetts

1"=200'

Owned By
Fox Hill Builders
31 Gallair Circle
Holden, MA 01520

REVISIONS

NO.	DATE	DESIGN	CHECKED
1	1/11/07	RMG	JPV



New
England
Environmental
Design, LLC

Environmental Consultants ■ Civil Engineering Consultants
Land Surveying Consultants
P.O. Box 376 Rutland, MA 01543
(508) 886-7888 Ph (508) 886-7889 Fax

NOTE:
-TOPO WAS DERIVED FROM USGS TOPOGRAPHICAL MAPS
-WETLANDS HAVE BEEN DERIVED FROM FIELD SURVEY
-BOUNDARY HAS BEEN DERIVED FROM PLAN BOOK 697 PLAN 96